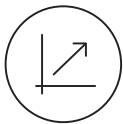


WJ530

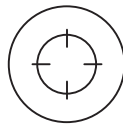
Triple Printhead Power Setting a New Efficiency Benchmark

Faster Speed and Consistent Precision for
Jewelry Wax Pattern Production



Ultra-High Efficiency

Multiple printheads
Production efficiency doubled



Exceptional Precision

Precision optimized
Superior detail representation



Stable & Durable

Patented self-developed
wax circulation control system
Reliable and durable



High Yield

Stable output
Yield up to 58%-60%



Intelligent Monitoring

Built-in camera
Print progress visible in real time

WJ530

Breakthrough in Efficiency and Precision



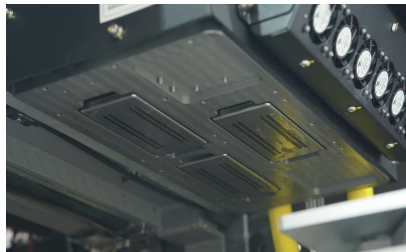
Ultra-High Efficiency

Print 1 inch (2.54cm) in just 4 hours
10-12kg/month per unit, delivering rapid printing
Easily meet peak-season order demands



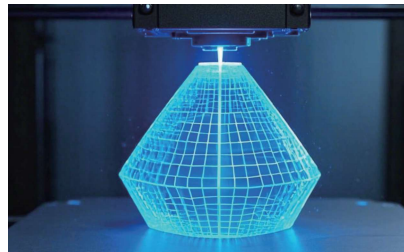
Exceptional Precision

Ultra-thin layer thickness of 15µm
High resolution of 2900×2900×1700 DPI
Reduce polishing costs by 25%-33%



Stable & Durable

Patented self-developed
wax circulation control system



High Yield

Stable output with a high yield of 58%-60%
Advanced technology and reliable printing
significantly boost yield, reduce material
waste, and maximize production efficiency.

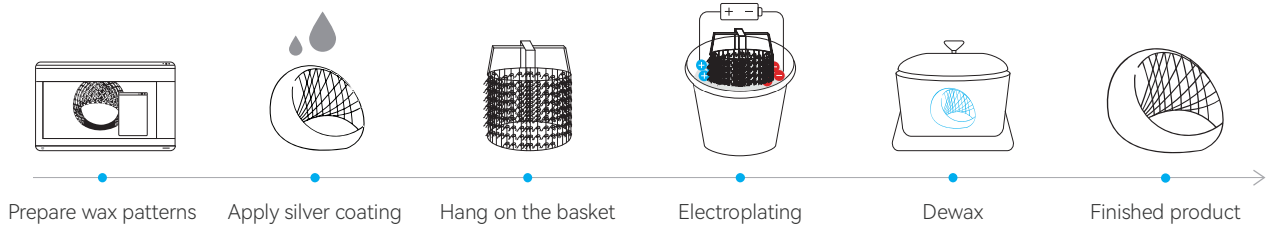


Intelligent Monitoring

Wi-Fi connectivity & 2K HD camera,
Monitor printing in real time for
worry-free production

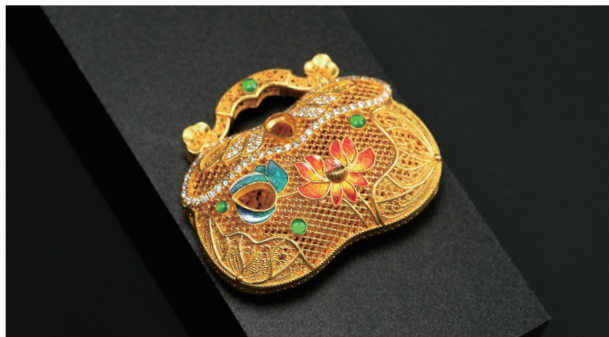
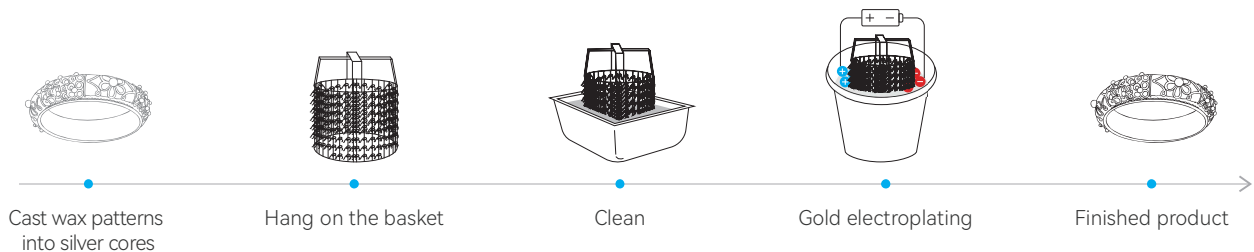
New Jewelry Techniques – Hard Gold Plating & Gold Vermeil

■ Hard Gold Plating | From WJ530-Printed Wax Patterns to Durable Jewelry



WJ530's ultra-thin layer thickness and ultra-high precision achieve precise details of wax patterns, providing a perfect electroplating foundation for hard gold plating.

■ Hard Gold Plating | From WJ530-Printed Wax Patterns to Durable Jewelry



WJ530's multi-printhead system speeds up wax pattern production while ensuring consistency in silver cores, significantly boosting the efficiency of gold vermeil jewelry batch production.

Broaden Applications in Jewelry Manufacturing



Mass Production

Running 24 hours daily, 7 days a week, a single WJ530 yields 10-12kg of red wax patterns monthly, effortlessly fulfilling bulk factory orders.



Small Batch Customization

Its multi-printhead system and 2900x2900x1700 DPI ultra-high resolution offer precision and flexibility, meeting customized demands.

WJ530 Specifications

| | |
|-----------------------------|---|
| Printing Technology | MultiJet Printing (MJP) |
| Build Volume | 289*208*150mm |
| Number of Printheads | 3 piezoelectric printheads |
| Dimensional Accuracy | 20mm ±0.04mm |
| Resolution | 2900*2900*1700 DPI; layer thickness: 15µm |
| Material Utilization | Part wax utilization ≥ 55% |
| Print Speed | ≥ 5.5mm/h with layer thickness of 15µm |
| Slicing Software | WaxJetprint |
| Supported Input Formats | stl, slc |
| Connectivity | Network 10/100/1000 Ethernet/USB/Wi-Fi |
| Supported Operating Systems | Windows 7 / Windows 10 (64bit) |
| Operating Environment | Temperature: 18-26°C; humidity: 30-70% |
| Equipment Dimensions | 1352*775*1600mm |
| Equipment Weight | 480kg |
| Packaging Dimensions | 1530*900*1837mm |
| Packaging Weight | 630kg |

Material Specifications

| Material Name | FFWJ1200 | FFMS3200 |
|-----------------------|--------------------------------------|---|
| Material Type | Part material | Support material |
| Net Weight | 3.0kg/bottle | 3.6kg/bottle |
| Composition | 100% wax | Wax support material |
| Color | Red | White |
| Density@90°C (liquid) | 0.79 | 0.85 |
| Melting Point | 68°C | 55°C |
| Softening Point | 63°C | / |
| Volumetric Shrinkage | 1.1% | / |
| Linear Shrinkage | 0.7% | / |
| Needle Penetration | 9 | / |
| Ash Content | <0.01% | / |
| Description | High-precision castable wax material | Hands-free dissolvable support material |



INDIA DEALER - SALES, TRAINING & SUPPORT Jewel 3D Technology

Main office:- Ground floor 1, Gali number 1/19 Ranchhodnagar Rajkot – 360003 **Contact:- 8000726726**
 Branch office:- 3rd floor, unit no.304-B, businessbay park, MIDC road no 11, near aarpee center,
 Andheri east Mumbai - 400093 **Contact:- 9510754264**
Email:- info@jewel3dtechnology.com